

1956

Porsche 356 A T1 Coupe

Price on request

SOLD



- KARDEX available
- Beautiful car for classic rally's and events
- Desirable & early 356A T1
- Matching motor, gearbox & colors
- FFSA passport

THE PORSCHE 356A T1

The work of Ferry Porsche, the first Porsche road car - the 356 - was based on the Volkswagen designed by his father, employing a similar platform-type chassis with rear-mounted air-cooled engine and torsion bar all-independent suspension. In 1951 a works car finished first in the 1,100cc class at the Le Mans 24-Hour Race, thus beginning the marque's long and illustrious association with La Sarthe.

Porsche's 356 defined what a Porsche is and set the template for its fabulous successors. The fruit of Porsche's first technical programme, the 356 A was launched in 1955 boasting significant improvements over earlier models. Other successes in Europe and the United States gave Porsche and the 356 the stellar reputations both brand and model enjoy today.

In production until 1965, the 356 is where the Porsche legend began and good examples have long been prized by collectors.

THIS PORSCHE 356 A

According to the Kardex, this car left Porsche's facilities in Augsburg on the 18th of July 1956 after being ordered by Lt. Harry E. Brizee. While its early history is unknown, the car was exported Germany to the United States when the lieutenant went home. At the end of 2007 the car came back to Europe and into the hands of its next caretaker, a Frenchman by the name of Vincent Liesnaro. He enjoyed on several outings and aquired an FFSA passport for official participation in bigger events.

The current owner bought it back in 2012 with the same goal in mind. Cherishing the amazing looks, driving it as it was intended, enjoying the revvy little engine,... He participated in several well known classic car events: Le Mans Classic; ING Ardenne Roads, Zoute Grand Prix Rally, the Grand Prix Nuvolari, and more...

Finished in Sahara Beige with red leather interior, this matching numbers Porsche 356A is in a generally very good condition. It has the Type 616/1 1600 engine delivering 60bhp but it feels a lot more powerful than the number suggests! The engine starts easily and revs through all the gears, it feels very solid under power, braking and turning.

The car is fresh and ready for rallies, shows or just getting a coffee. It comes with jack, tool rol, FFSA passport and the Kardex. It is also equipped with a circuit braker for storing during wintertime. The car currently has a Belgian Registration.

It is important to note that it is still matching numbers to this date, retaining its original engine. Presented in beautiful colours, this attractive car will surely turn heads wherever it goes and set you apart in the world 356's.

Specifications

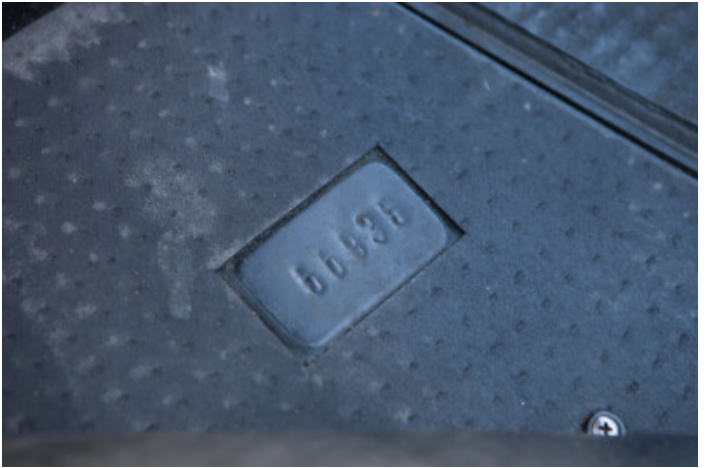
Mark	Porsche
Model	356 A T1 Coupe
First use	17 / 09 / 1956
Chassis	56935
Engine	1,582 cc flat-4
Transmission	Manual gearbox
Mileage	67647 mi
Color	Sahara Beige
Interior	Red
Power	60 hp
Fuel	Gas/Petrol (normal)

SOLD















Simon Desmarez

+32 (0)56 20 68 88

simon@rscautomobile.com

Christophe Piette

+32 (0)56 20 68 88

christophe@rscautomobile.com

Aalbeeksesteenweg 2, 8930 Lauwe — <https://rscautomobile.com/>