

1966

Mercedes-Benz W112 300SE CABRIOLET

€ 198.000



- One of 708 examples made of the 300 SE Cabriolet
- The pinnacle of 60's luxury
- Stunningly presented example
- Said 3 owners since new
- Delivered new in Belgium

THE STORY

The Mercedes-Benz W112 series cars were introduced in 1962 in limited production coupe and cabriolet body styles to serve as a bridge between the less expensive W111 models and the soon to be released Mercedes-Benz flagship 600 sedans and limousines. The W112s, marketed as a 300SE, were designed by Paul Bracq and updated the existing W111s with more refined looks and additional technical advancements. Both W111s and W112s continued to be sold through model year 1967, with only a small percentage of buyers opting for the much more expensive W112 models.

Designated the 300SE, the ultra-luxurious coupe and its cabriolet counterpart incorporated more chrome detailing, refined wood and leather interior appointments, power steering, power windows, an optional automatic transmission, self-leveling air suspension, all-wheel disc brakes and the 300SL-sourced, aluminum-head, 3.0L, Bosch fuel-injected inline-6 engine. Hand-built and priced around 35% higher than the comparable W111 models, the W112 variants attracted well-heeled buyers including Yul Brynner, Doris Day, Melvin Belli, Alfred Hitchcock and Bill Harrah.

THIS W112 300SE Cabriolet

This stunning classic boasts an impressive pedigree, having had only three owners since new. The second owner, a distinguished antique dealer from Brussels, cherished the car throughout its lifetime. Although the early ownership records are unavailable, the car's condition and maintenance suggest it was cherished throughout its life. The antique dealer recalls purchasing the car directly from the original owner

One of 708 built from 1962 through 1967, this elegant 1966 300SE cabriolet is one produced with the M189.984 alloy block. About a decade ago, the vehicle suffered minor cosmetic damage caused by a product in an underground garage. This led to a meticulous full repaint, ensuring the car retained its original elegance without compromising its authenticity—remarkably, not a single body panel was welded or replaced, even the infamous front inner fender reinforcement remains untouched. Every detail of the restoration reflects the utmost care: all chrome elements have been redone to perfection, a brand-new convertible top was fitted, and a new windscreen installed to enhance its aesthetic and functionality.

Extensively restored and presented in beautiful overall finish, its beautiful classic gray metallic exterior finish is enhanced by a black convertible top, tasteful chrome bumpers and trim, dual exhaust tips and color-matching full sized wheel covers. The superbly luxurious interior provides a splendid counterpoint with tan leather upholstery and top-boot cover, rich varnished wood-grain trim, power windows and locks, VDO gauges and a Becker Europe AM/FM radio.

In 2024, the car was bought by the current owner, a Mercedes lover and collector who had the car serviced, it underwent important maintenance to ensure optimal performance. This included servicing the air suspension, water pump replacement, and conducting a comprehensive engine service. The odometer reads just under 3,900 km, believed to reflect a total mileage of 103,900 km since new—a figure consistent with its exceptional condition!

Documented with its current title and its 2nd owner's title from 1983, this 1966 300SE cabriolet comes with its original binder, manual (betriebsanleitung) and 'Europa' service center map. In the trunk we see the original spare wheel, jack, toolkit and even the original manual on how to change your spare wheel!

This exceptional car epitomizes Mercedes-Benz luxury and exclusivity, blending original preservation with tasteful restoration—a rare and coveted treasure for discerning enthusiasts.

The car is sold on behalve of a client and currently has Belgian registration.

Specifications

Mark	Mercedes-Benz
Model	W112 300SE CABRIOLET
First use	24/08/1966
Chassis	112023100094**
Engine	2.996cc - 6 cil. engine
Transmission	Manual gearbox

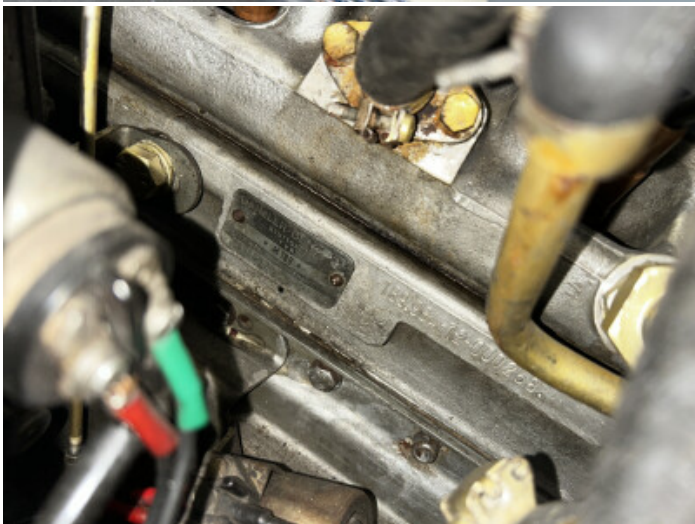
Mileage	103875 km
Color	DB 172 Anthracite gray metallic
Interior	210 Natural Brown
Power	170 hp
Fuel	Gas/Petrol (normal)













Simon Desmarez
+32 (0)56 20 68 88
simon@rscautomobile.com

Christophe Piette
+32 (0)56 20 68 88
christophe@rscautomobile.com

Aalbeeksesteenweg 2, 8930 Lauwe — <https://rscautomobile.com/>